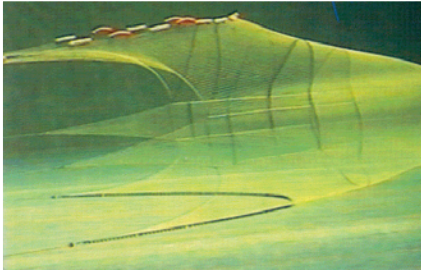


# GEONET-DATANET



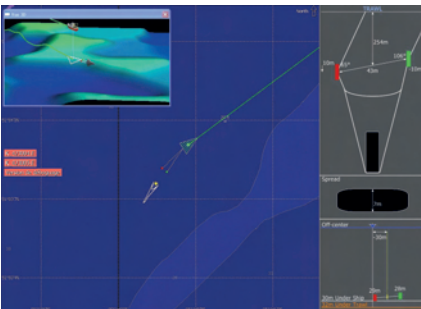
## Control

Productivity, fuel consumption, equipment wear and tear and safety depend on your control of the trawl...



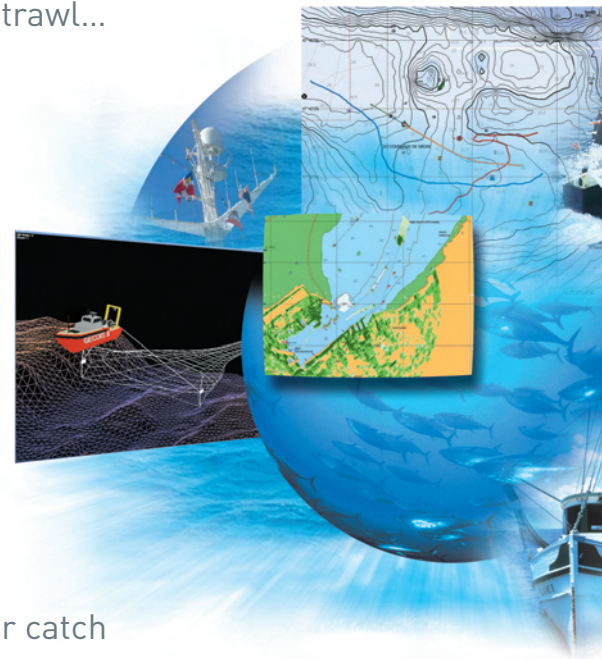
## Position

Position your fishing gear as close as possible to areas with fish. Avoid incidents.



## Select

Combine GEONET with TURBO TACTIC and select your catch by 3D tracking of trawl + fish.



Selected by OPTIPECHE, GEONET is the only system that positions the two doors simultaneously. Catch with precision and reduce your time at sea. Detect the slightest rig maladjustments and reduce wear. Save energy and move into profit.

**WASSP**  
Detection  
Fishing  
Bathymetry

**TURBO TACTIC**  
Optimization  
Fishing strategy  
Consumption  
Navigation  
Radar, AIS

**GEONET**  
Positioning  
Trawl geometry  
Water temperature

**FISHING DATABASE**  
Fishing  
Bathymetry  
Acoustics  
Oceanography

**ELECTRONIC LOG**  
Commercial and administrative management of catches

SUSTAINABLE FISHING STRATEGY



# GEONET-DATANET

## High technology and future developments

GEONET benefits from the highest engineering and manufacturing quality standards of the iXMarine group in Brest. GEONET is a core partner in the "Optipêche" development programme of the Mer Bretagne competitiveness cluster, aiming to optimize trawl geometry and drag.

## Net control

SODENA GEONET is designed to give perfect control of the trawl while being very easy to implement, through the use of the smallest possible number of sensors. Each door transponder has a depth sensor, enabling you to adjust your manoeuvring to within 10 cm!

## Catch selection

Transform your trawl into a fishery resources "selection" tool by controlling its position with respect to the fish. This makes it "selective".

Based on low-frequency acoustic technology providing long ranges, GEONET is the only system on the market positioning each the two door sensors.

## Intuitive data display

GEONET has a user-friendly graphic interface displaying the essential numerical data in combination with the geometrical representation of the fishing gear in the vertical and horizontal planes. GEONET includes an exclusive trawl behaviour analysis function, in real time or in "playback" mode on a completed fishing run. It is an essential rig adjustment optimization tool.

## Relevant information

### 2 door sensors

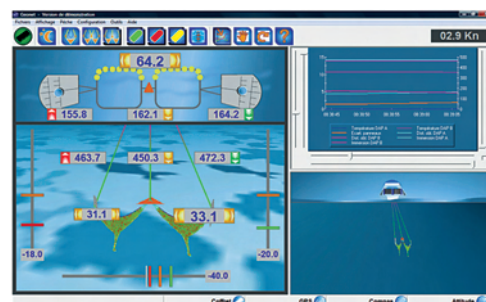
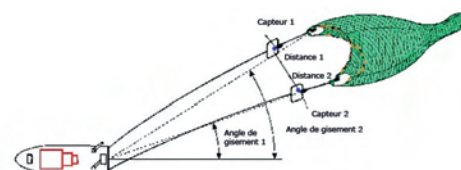
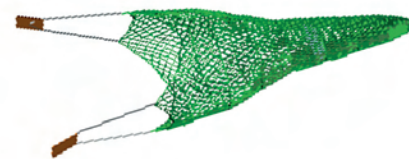
- Starboard Door-Boat and Port Door-Boat distances
- Horizontal trawl spread
- Depth of each door
- Water temperature
- Geometry in the horizontal plane
- Geometry in the vertical plane

### Headrope

- Headrope-Bottom vertical distance

### Catch sensor option

- Trawl cod end load detection



Combine GEONET with TURBO TACTIC and optimize your yield!

SODENA SAS

30 av. de l'Amiral Lemonnier • 78160 Marly-le-Roi - France

Tel: +33 1 30 08 97 00 • Fax: +33 1 30 08 97 01

[www.sodena.eu](http://www.sodena.eu)

[info@sodena.eu](mailto:info@sodena.eu)

