

MOLBRIDGE



MOLBRIDGE

MolBridge is an integration platform for the bridge and bridge systems. The main part of the system is the KVM-matrix (Keyboard, Video, Mouse) which lets the user select and control the different bridge systems from one common mouse/keyboard and select the monitor to display the systems on.

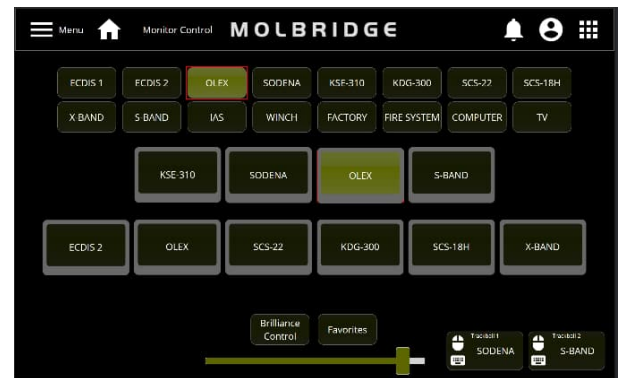
In addition, the MolBridge system is expandable for integration of various systems on the bridge and lets the user control the functions from the touch screens, such as outside lights, window heating etc.

KVM MATRIX

CHANGE INPUT SOURCE

Select the computer you want to display on the top rows by pressing the icon, press the monitor you want to display the computer on.

The system does the selected operation, and the new computer source will be displayed on the monitor feedback. This gives the user a good overview of what is displayed on each monitor.



COMMON CONTROL



To change the system to control by mouse/keyboard, select the "Trackball" icon in the bottom right corner and press the monitor you want to control. This gives the user full access to USB functions to the connected system.

USB 2.0 through the matrix allows functions like touch screen and USB mass storage device to work from the common USB input.

FAVORITES

When a suitable setup of the monitors has been made, the user can save the settings as a favorite monitor setup to quickly apply the same settings later.

The system allows up to 8 different favorite setups.

Where the name of the favorite can be edited by the user from the touch screen.



BRIGHTNESS CONTROL

MolBridge also allows the user to set the brightness levels individually on each connected monitor*. Brightness can be adjusted with "DAY", "DUSK" or "NIGHT" preset buttons to quickly adjust the backlight, with a slider or by using the plus and minus buttons located on the touch screen.

*NOTE! Monitors must support external control of backlight (ethernet or serial)

MOLBRIDGE

MolBridge and the KVM Matrix function give the user flexibility to select what computer to be displayed on the monitor of choice and what system to control from the common mouse/keyboard.

One of the main benefits of the MolBridge system is that it is scalable from the smallest vessels to the bigger and more complex vessels. The matrix switch is adapted to the size of the system, and can also be expanded. No need to buy one big box that has to be exchanged in the near future.

The system is not locked to a certain amounts of inputs and outputs. As an example: 100 computers can share 1 monitor, or 1 computer can be displayed on 100 monitors.

TOUCH SCREEN MONITOR

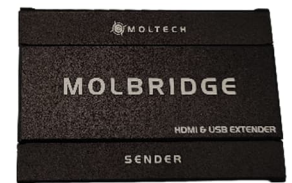
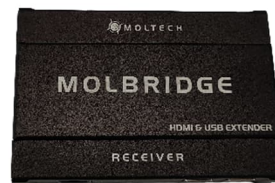


Control of the MolBridge is done from the touch screens. A system can have up to 12 different touch screens placed in various locations. The touch screens come in all various sizes from 7" and up.

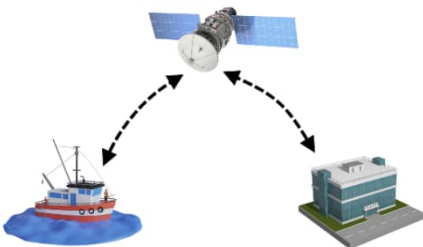


RECEIVERS AND TRANSMITTERS

With PoE the receiver and transceiver boxes are quick and easy to install. No need for additional wiring for power cables. Simply plug in the network cable from the matrix switch and the boxes will be powered up.



REMOTE CONTROL



An additional feature to MolBridge is the remote control function. All systems (*with USB control available*) connected to the MolBridge system can be controlled from a remote location. This will allow older computers that are not safe to connect to internet, controllable from a remote location on shore.

ADDITIONAL CONTROLS

MolBridge can be used to control various different equipment that allows third party control. This could be systems like: Window wipers, outside lights, navigation lights, ships whistle, hydraulic pumps etc. New control interfaces can be made upon request*.

**Note! Could require additional costs.*

MOLBRIDGE SYSTEM TOPOLOGY



Products marked with this symbol are changeable without any configuration changes. Just plug out the defective equipment and plug in the new.



USB 2.0 allows data transfer up to 480Mbit/s, giving the user the possibility to transfer data through the matrix from a common USB input.



High-Definition Multimedia Interface, audio/video interface for transmitting digital video and audio to and from a HDMI-compliant source device. MolBridge allows both video and sound through the matrix.



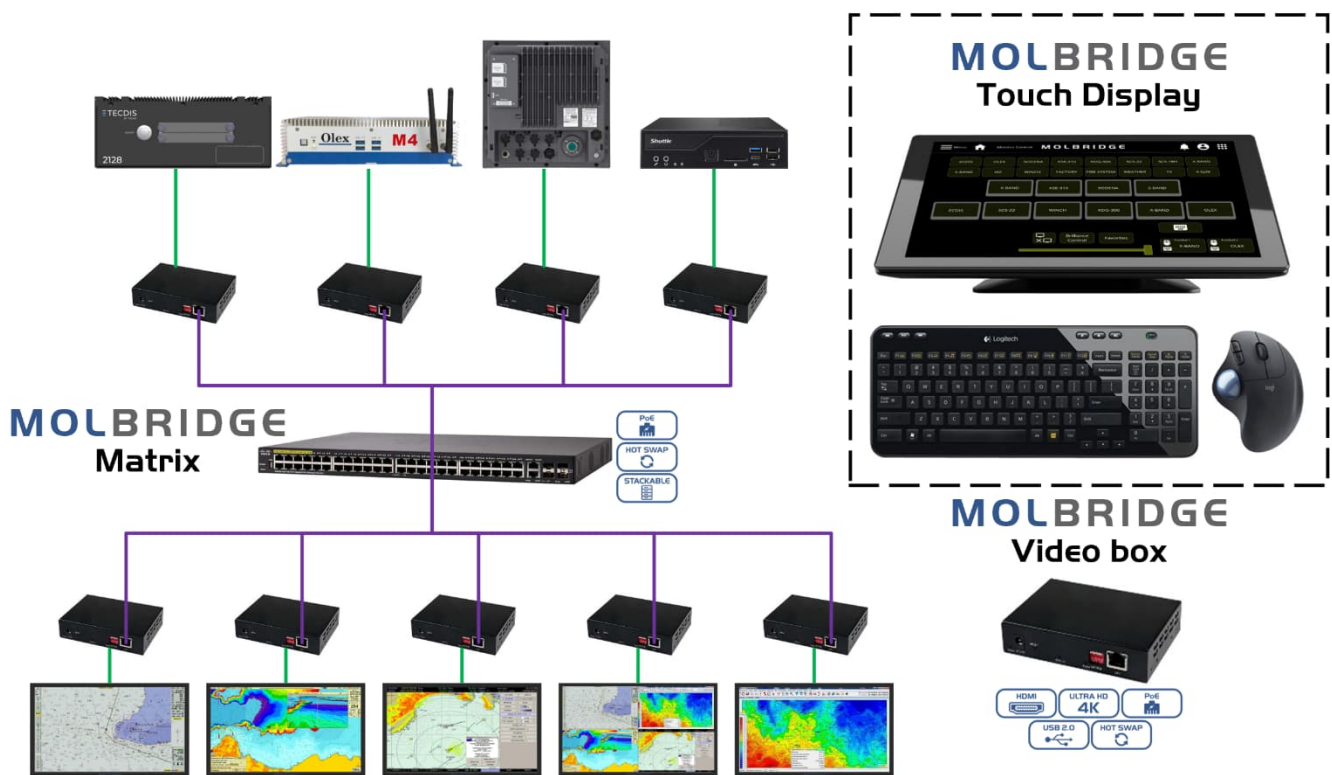
Support video resolution up to 3840 × 2160 (30fps)



Ability to connect multiple switches together and operate as a single unit. This is useful for quickly increasing the capacity of a network.



Power over Ethernet passes electric power along with data on twisted-pair Ethernet cabling. This allows a single cable to provide both data connection and electric power to a device.



CONTACT & INFORMATION

For more information go to www.moltech.no

E-mail: sales@moltech.no

Phone: +47 70 10 28 80

