

Power ON/OFF

Power ON

→ The start-up screen is displayed.

Push

- When the menu of [Hull unit operation at the start] is set in [No], push the key, the Transducer unit will go down after initial screen is displayed.

- When the menu of [Hull unit operation at the start] is set in [Yes], the Transducer unit automatically will go down after initial screen is displayed.

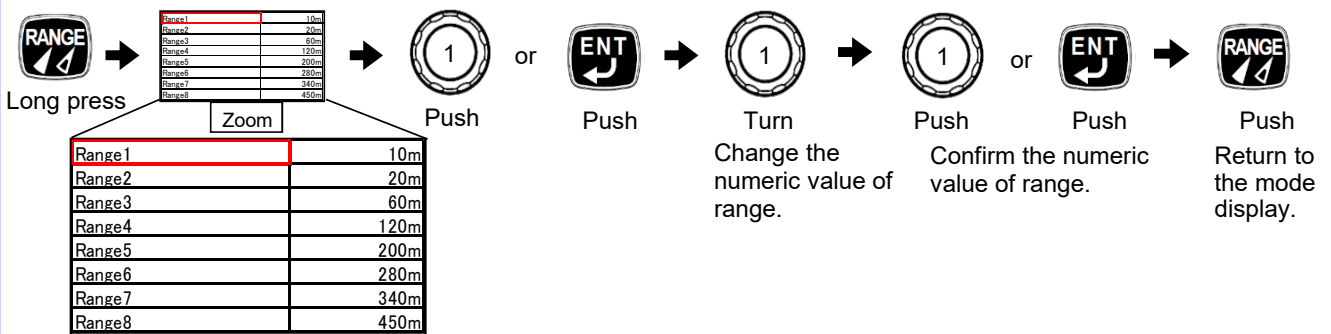
Power OFF

→ Keep pressed until [Preparing to shutdown] will be displayed.

Long press

Caution: It takes some time to handle the start of the program or the end at the time of power supply ON or OFF.

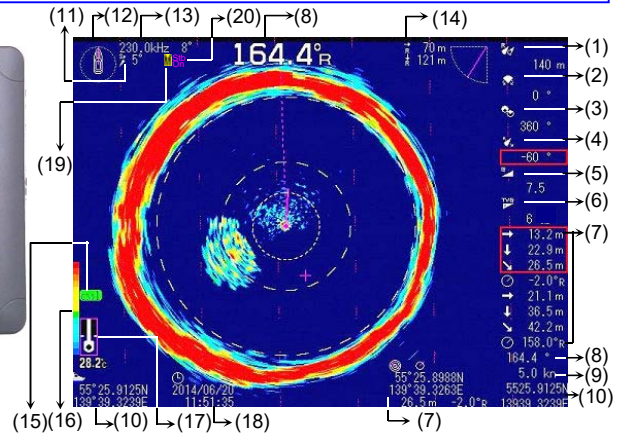
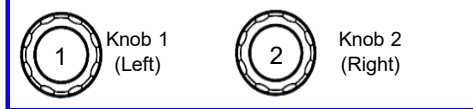
Change of Range setting



The list of RANGE will be displayed on the screen.



Operation panel



Display example

- | | | | |
|--------------------|--------------------------|---|---|
| (1) RANGE | (6) TVG | (11) Step angle | (16) Rainbow pattern (Color palette) |
| (2) Bearing center | (7) VRM | (12) Scan direction | (17) Transducer position and Water temp. 26.6°C |
| (3) Sector | (8) Ship's bearing | (13) Frequency and Directivity angle | (18) Date/Time |
| (4) TILT | (9) Ship's speed | (14) Horizontal/Slant distance of current range | (19) FIR |
| (5) GAIN | (10) Own ship's position | (15) CM status | (20) Stabilizer state
Displayed only when DHU-6302-BRD.B (AS) is installed |

Menu



*Select the menu. Select the menu item. Confirm of the menu item. Select the setting item. Confirm of the setting item.

*The display will be switched over in the order of [Menu1], [Menu2], [Menu3] or menu not display.

Switch of Range

This menu can be also changed by [Menu 1].



Push



Turn

The red color box will move to [RANGE] of information screen. Change the range.

Adjustment of Gain



Push



Turn

The red color box will move to [GAIN] of information screen. Change the gain.

Change of the scan direction



Push



Turn

The red color box will move to [Bearing center] information screen. Change the angle of sector.

Select / Confirm of the presentation modes



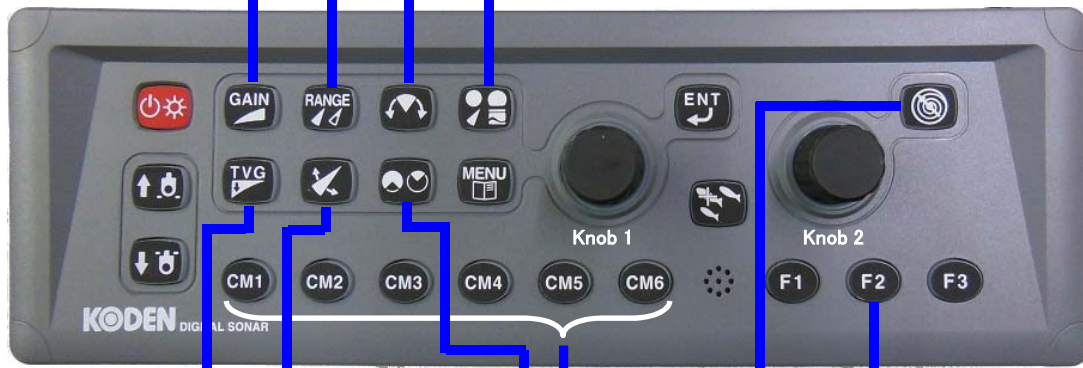
Push



Turn

Select the display menu. Put red color box on the screen menu to display.

Select one of the display menu, [Sonar], [Sonar (Off-center)], [Bottom-scan], [Echo sounder], [Sonar & One line] or [Sonar x 2].



Knob 1 (Left)



Knob 2 (Right)

Change of TVG setting



Push



Turn

The red color box will move to [TVG] of information screen. Change the TVG.

Change of the tilt angle



Push



Turn

The red color box will move to [TILT] of information screen. Change the angle of tilt.

Change of the scan sector



Push



Turn

The red color box will move to [Sector] of information screen. Change the angle of sector.

Switch of frequency

This menu can be also changed by [Menu 1].



Push



Turn



Display the frequency. Change the frequency.



Push

or



Push

Other functions can be assigned to F2. (Initial setting: Frequency)

Confirm the frequency.

Note: Set frequency is shown at the upper left.

Operation of VRM



Push



Turn

Go VRM up and down.

Recall of CM setting



~ Push



*[Language], [Range & speed unit], [Temperature unit] and etc. are used in commonly.

You can recall the settings by selecting CM1 to CM6. Each CM key recalls the preferred values saved for different fish type, seasons and fishing points.